

MONTHLY MEMBERSHIP PROGRESS REPORT

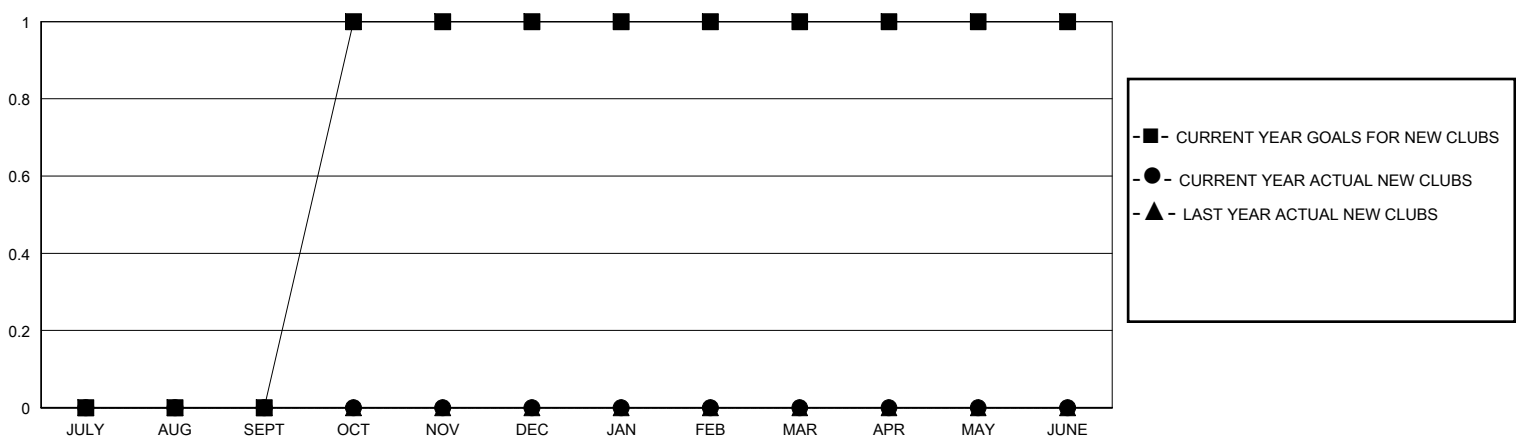
District 26 M3

Results as of: 6/30/2025

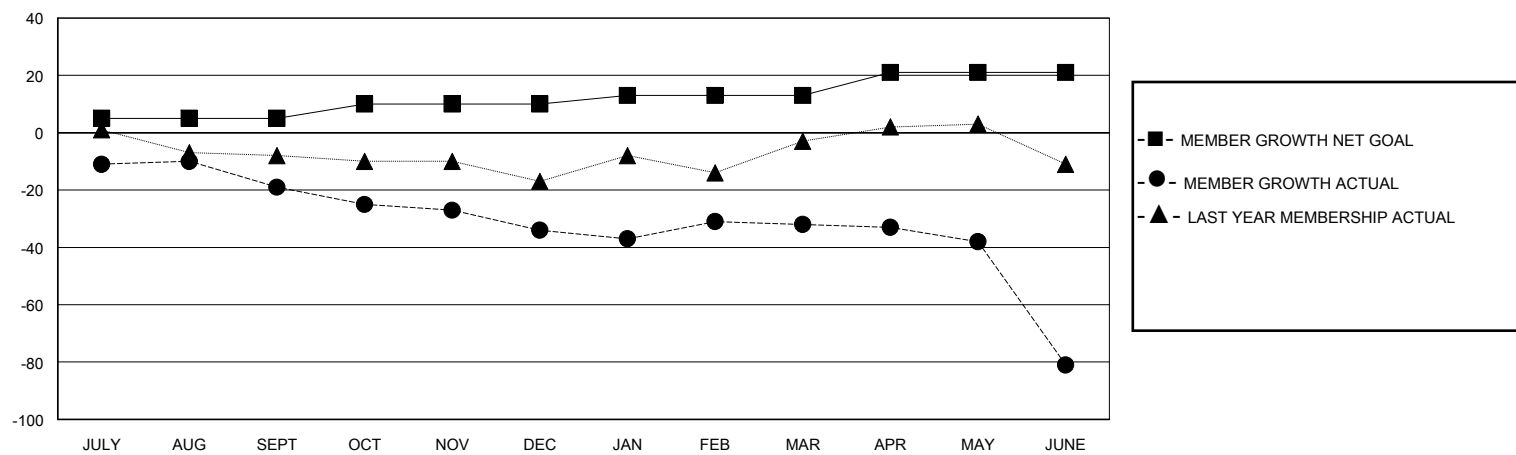
GMT: LOCATION MISSOURI GMT CA

Clubs				Members			
RESULTS FOR 2024-2025				RESULTS FOR 2024-2025			
QUARTER	NEW CLUB GOAL	NEW CLUBS	DROPPED CLUBS	QUARTER	MEMBER GROWTH NET GOAL	MEMBER GROWTH ACTUAL	DROPPED MEMBERS ACTUAL (including transfers)
JULY/AUG/SEPT	0	0	0	JULY/AUG/SEPT	5	17	33
OCT/NOV/DEC	1	0	1	OCT/NOV/DEC	5	15	29
JAN/FEB/MAR	0	0	1	JAN/FEB/MAR	3	24	21
APR/MAY/JUNE	0	0	1	APR/MAY/JUNE	8	7	54

GOALS AND ACTUAL NEW CLUBS CUMULATIVE



GOALS AND ACTUAL MEMBERS CUMULATIVE



DROPPED CLUBS: 3	17 CLUBS OF 50 ADDED 1 OR MORE NEW MEMBERS	<u>GENDER DISTRIBUTION</u> MALE 727 (72.85%) FEMALE 271 (27.15%)
<u>DROPPED MEMBERS</u> DECEASED 18 CLUB CANCELLED 37 OTHER 82 TOTAL 137	<a href="#">CLICK HERE FOR CUMULATIVE MEMBERSHIP DATA</a>	TOTAL FAMILY UNIT MEMBERS 99 FAMILY MEMBERS PAYING HALF DUES 51